



Enterprise Reporting Solution

Argos 6.9.1 Release Guide

Product version 6.9.1

Last updated 9/29/2022

Trademark, Publishing Statement, and Copyright Notice

© 1998-2022 Evisions. All rights reserved.

This software and related documentation are provided under a license agreement containing restrictions on use and disclosure and are protected by intellectual property laws. No part of this document may be reproduced, stored in or introduced into a retrieval system, or transmitted in any form or by any means (electronic, mechanical, photocopying, recording, or otherwise), or for any purpose, without the express written permission of Evisions.

The information contained herein is subject to change without notice and is not warranted to be error-free. Product features referenced herein for a period of time may not match product contents. Evisions does not warrant that the functions contained in the software will meet your requirements or that the operation of the software will be uninterrupted or error free. Evisions reserves the right to make changes and/or improvements in the software without notice at any time.

This software and documentation may provide access to or information on content, products, and services from third parties. Evisions and its affiliates are not responsible for and expressly disclaim all warranties of any kind with respect to third-party content, products, and services. Evisions and its affiliates will not be responsible for any loss, costs, or damages incurred due to your access to or use of third-party content, products, or services. Evisions does not endorse the content or developer of any products or web sites mentioned.

All information in this guide is designed for instructional purposes only. Evisions makes no guarantees regarding the accuracy or performance of any techniques used in this guide. Software configurations and environments may vary, and some techniques used in this guide may not operate efficiently under all configurations. This guide may contain examples of various technologies or products, which are the sole property and responsibility of their creators.

Trademarks are the property of the respective owners for any products mentioned herein.

Table of Contents

- What's New in Argos 6.9.1?** 4
 - MAPS and Argos Updates 4
 - Product versions 4
 - Installation 5
 - 1. Prepare test environment and ensure current backup 5
 - 2. Check for updates 5
 - 3. Allow update process to complete 5
 - 4. Verify the latest version is installed 5
- Argos 6.9.1 Release Notes** 6
- Getting Help** 8
 - Can't find what you're looking for? 8

What's New in Argos 6.9.1?

Evisions is pleased to announce the release of Argos version 6.9.1, which includes the following changes:

Argos Enhancements:

- Improved focus indicator visibility for several areas within the Web Viewer.
- Relocated the Design button on the General tab of the Report Editor dialog.
- Additional enhancements.

Argos Resolved Issues:

- Border styles on shapes were failing to turn clear.
- Clicking out of a query cancellation modal caused it to close unexpectedly.

MAPS Enhancements:

- Improved LDAP search capabilities.
- Added support for IP Restrictions for IPv6 addresses.

MAPS Resolved Issues:

- Microsoft OLE DB Driver 18 for SQL Server was failing to save Driver Properties settings.
- Additional resolved issues.

We appreciate the feedback received from all of our users. Our products would not be what they are today without your continued support. If you have any comments or suggestions, please do not hesitate to [open a HelpDesk ticket](#) and let us know.

MAPS and Argos Updates

Some of the changes in this release require an update to MAPS as well as to Argos. We recommend upgrading both products to the latest versions concurrently.

Product versions

The latest versions of MAPS and Argos included in this release are:

- Argos mapplet 6.9.1.2083 / Argos client 6.9.1.2477 / Web Viewer 6.9.1.1
- MAPS service 6.9.1.2606 / MAPS Config 6.9.1.1452 / eLauncher 6.9.1.3 / REST Connector 1.2.0.48

Installation

1. Prepare test environment and ensure current backup

We highly recommend installing updates in a test environment before applying them to your production environment. You should make sure that a current backup is available in case of any unforeseen issues. To create a full backup of your MAPS environment, go to the **Server -> Backups** screen in MAPS and click **Backup Now**.

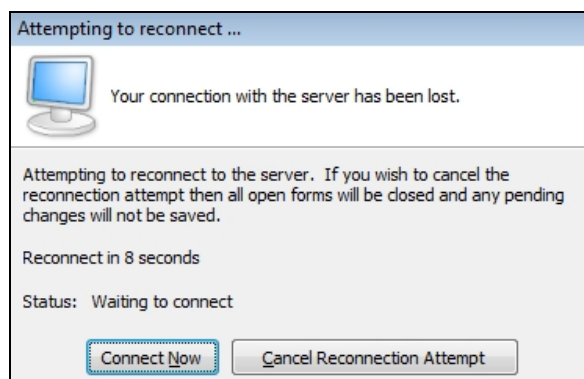
2. Check for updates

Click the **Check for Updates** button in the MAPS Config application to view available updates.

It is possible to apply updates when users are on the system; however, to avoid the possibility of losing unsaved work we recommend applying updates during off hours.

3. Allow update process to complete

When applying updates to the MAPS service you will be temporarily disconnected from the server:



The update process may take a few minutes to complete. **Do NOT cancel the reconnection attempt or manually restart the server.** You will automatically be reconnected to the server once the update has been applied.

4. Verify the latest version is installed

To ensure that you are on the most current version, continue clicking the **Check for Updates** button and applying the updates until no new updates are available.

Please Provide Us with Your Feedback!

As always, we welcome any [feedback or suggestions](#) you may have. We very much appreciate your thoughts and suggestions, so please keep the great ideas coming!

Argos 6.9.1 Release Notes

Argos Mapplet 6.9.1.2083 / Argos Client 6.9.1.2477 / Web Viewer 6.9.1.1

MAPS Service 6.9.1.2606 / MAPS Config 6.9.1.1452 / eLauncher 6.9.1.3 / REST Connector 1.2.0.48

Argos

Enhancements

Area	Description	Issue number
Accessibility	Improved the tab order in multiple areas of the Edit Report dialog.	AR-7645
AWV	Improved focus indicator visibility for several areas within the Web Viewer.	AR-7632
Reports	Relocated the Design button on the General tab of the Report Editor dialog to better suit the overall report design flow.	AR-4154

Resolved Issues

Area	Description	Issue number
AWV	Clicking out of a query cancellation modal in the Web Viewer caused it to close, and prevented it from reappearing.	AR-7633
Dashboards	When set to a width of 0, border styles on shapes were failing to change to clear in the Argos client.	AR-5876

Enhancements

Area	Description	Issue number
IP Restrictions	Added support for IP Restrictions for IPv6 addresses.	MAPS-3350
LDAP	MAPS Administrators can now add multiple user or group search trees for a single LDAP Server.	MAPS-1070
LDAP	LDAP Users and Groups have been separated into two menus to align with the added support for single LDAP servers being able to perform searches using multiple root directories.	MAPS-1104

Resolved Issues

Area	Description	Issue number
Data Connections	Selecting the Test button after attempting to use Microsoft OLE DB Driver 18 for SQL Server would produce an error, and all authentication and database settings in Driver properties were set back to default.	MAPS-2564
Data Connections	Restarting or reconnecting to MAPS while editing a Cloud Connector Data Connection resulted in access violations.	MAPS-1735
IP Restrictions	The warning dialog for overlapping IP Restriction address ranges was failing to appear.	MAPS-3379
IP Restrictions	Dialog warnings regarding overlapping IP Restrictions were failing to appear.	MAPS-3378
IP Restriction	Edits to IP Restrictions were not immediately appearing after being applied.	MAPS-2060

Getting Help

For information on using the software, please refer to the product Help, which contains detailed information on all aspects of the product.

If you are having problems with the installation or configuration, you can search our [support site](#), which includes a knowledge base of common issues. If you are unable to find the solution, submit a HelpDesk request with a detailed explanation of the problem you are experiencing.

Please do not hesitate to contact the Evisions HelpDesk if any questions or problems arise. We are here to help you and want to ensure your success.

Can't find what you're looking for?

We would love to make our documentation better! If you have a moment to let us know what we missed or how we can make the help more useful, please email us at TechDocs@evisions.com.